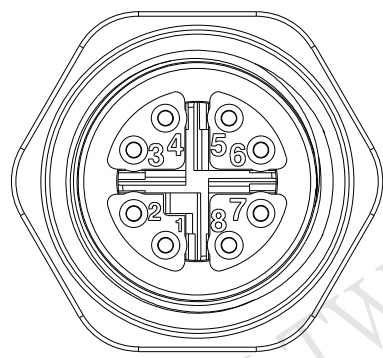
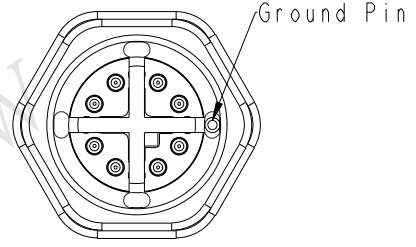
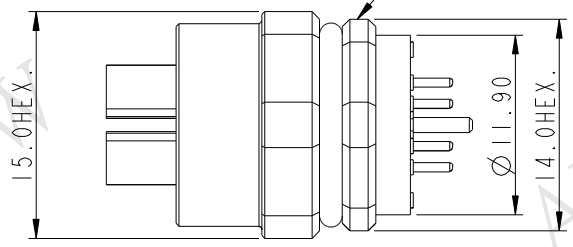
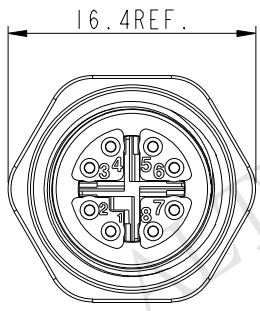
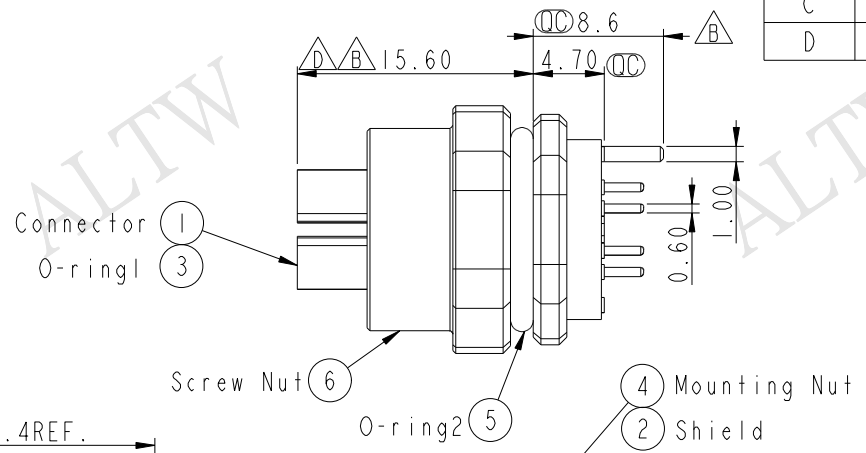
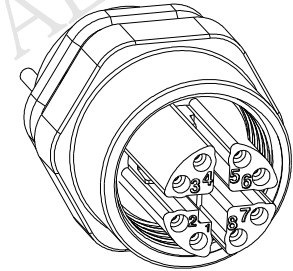
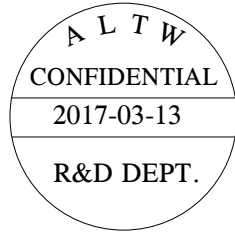
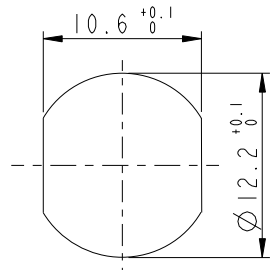


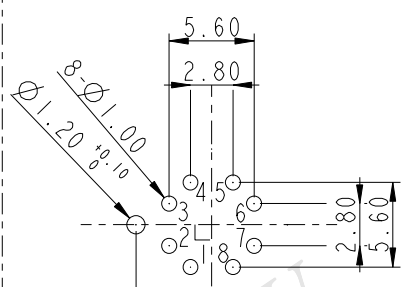
REV.	ECN NO.	DATE	SIGN	DESCRIPTION
B	LE316B0094	2016/10/26	Cary Liu	Improvement Product
C	LEN1720011	2017-02-08	Frank Deng	Change Rated Voltage
D	LEN1730161	2017-03-13	Spring Liu	Update the note & Dimension



Conn. Pin Assignment Front View



Recommended Panel Cut-out



Recommended PCB Lay-out (Conn. Side)

- Note:
- * (CC) Important Dimension To Check.
 - * Waterproof Rate: IP67 (Mated Condition)
 - * Rated Voltage: 50V AC ,60V DC
 - * Rated Current @40°C: 0.5A
 - * Connector: PA, Black
 - * Female Pin: Copper Alloy, Gold Plated
 - * Mounting Nut: Zinc Alloy, Nickel Plated
 - * Shield: Brass, Nickel Plated
 - * Screw Nut: Zinc Alloy, Nickel Plated
 - * O-Ring1: Silicon, Gray
 - * O-Ring2: Silicon, Gray
 - * For Panel Thickness Range: 2.0~3.0mm
 - * For PCB Thickness Max. 1.6mm

UNIT:mm	TITLE M12 X-code Female Receptacle Straight, Thru-hole			Amphenol LTW 安費諾亮泰企業股份有限公司	ITEM NO	MSXS-08PFFP-SF7001	DRAWN BY	Frank Deng	DATE	2017-03-13		
	TOLERANCE .X ±0.25 .XX ±0.1 .XXX ±0.05 ANGLES ±1°	SCALE	2:1		SIZE	A4	SHEET	1	OF	1	DWG NO	MSXS-08PFFP-SF7001
		REV.	D		WC-REV.	A.4	(CC): Inspection item		CHECKED BY	Spring Liu	DATE	2017-03-13
		CUSTOMER	ALTW		APPROVED BY	Kevin Hu	DATE	2017-03-13				

THIS DOCUMENT IS SUBJECT TO CHANGE WITHOUT NOTICE. IT IS CONFIDENTIAL AND A PROPERTY OF Amphenol LTW. DISCLOSURE TO THIRD PARTY HAS TO BE AUTHORIZED BY Amphenol LTW.