

REVISIONS				
EC NO	DATE	REV	DESCRIPTION	CHANGER
	2016.04.13	A	INITIAL RELELASE.	DICK
	2016.04.27	A1	NO CHANGE.	DICK
	2016.04.27	A2	NO CHANGE.	DICK

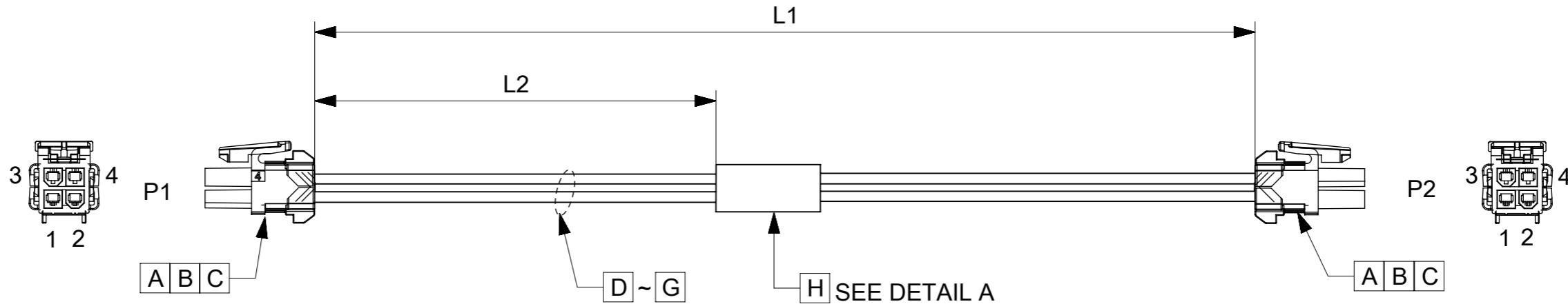
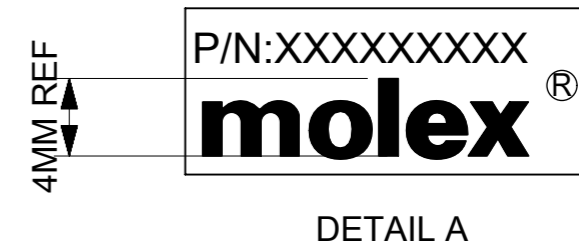


TABLE			
PART NUMBER	L1	L2	TITLE
451350401	150±10	65±8	Minifit 4 Circuit 150MM
451350403	300±10	140±10	Minifit 4 Circuit 300MM
451350410	1000±15	490±10	Minifit 4 Circuit 1M



NOTES

1. THIS PRODUCT MUST MEET 2011/65/EU ROHS COMPLIANCE.
此产品需符合 2011/65/EU ROHS环保要求.
2. ELECTRICAL PERFORMANCE REFER TO ES-000.
电气特性参考ES-000.
3. LABEL TEXT MUST BE 2mm Min. IN HEIGHT WITH ARIAL FONT.
标签字高最小2mm, 字体ARIAL.
4. CONNECTORS REFER TO PS-172718-0000 & AS-172718-0000.
连接器应用参考 PS-172718-0000 & AS-172718-0000.
5. STICK UL LABEL ON THE OUTSIDE CARTON.
外箱上贴UL标签.

H	Blank label 25.4x36.5mm (WHT:12.7mm)		1
G	16AWG;PLATED;PVC;YL;OD=2.35MM;UL1007		A/R
F	16AWG;PLATED;PVC;OR;OD=2.35MM;UL1007		A/R
E	16AWG;PLATED;PVC;RD;OD=2.35MM;UL1007		A/R
D	16AWG;PLATED;PVC;BK;OD=2.35MM;UL1007		A/R
C	MINIFIT TPA 2.0, RECPT TPA, V-0, 2CKT		4
B	MINIFIT TPA 2.0,CRP TERM,C260,16AWG S CN		8
A	MINIFIT TPA 2.0, DR RECPT HSG, V-0, 4CKT		2
ITEM	DESCRIPTION	L(MM)	Q'TY

WIRING CHART		
P1	P2	COLOR
1	2	BLACK
2	1	RED
3	4	ORANGE
4	3	YELLOW

QUALITY SYMBOLS ▽A = 0 ▽E = 0 ▽F = 0 ▽ = 0 ▽C = 0 ⊗ = 0 ■ = 0 ▽ = 0	THIS DRAWING CONTAINS INFORMATION THAT IS PROPRIETARY TO MOLEX ELECTRONIC TECHNOLOGIES, LLC AND SHOULD NOT BE USED WITHOUT WRITTEN PERMISSION		DIMENSION UNITS: mm SCALE: NTS			
	GENERAL TOLERANCES (UNLESS SPECIFIED) ANGULAR TOL ± °		DRWN BY: WLXIE DATE: 2016/03/02			SEE TABLE
	4 PLACES ± 3 PLACES ± 2 PLACES ± 1 PLACE ± 0 PLACES ±		CHK'D BY: DHUANG16 DATE: 2016/03/29			
	EC NO: 104564 DRWN: WLXIE CHK'D: YXZOU APPR: YXZOU		APPR BY: YXZOU DATE: 2016/04/20			PRODUCT CUSTOMER DRAWING
DRAFT WHERE APPLICABLE MUST REMAIN WITHIN DIMENSIONS		DRAWING SIZE: A3 THIRD ANGLE PROJECTION		SERIES: 201234 MATERIAL NUMBER: SEE TABLE CUSTOMER: GENERAL MARKET		
A2		DOCUMENT NUMBER: 2012341035 DOC TYPE: PSD DOC PART: 000 SHEET NUMBER: 1 OF 1				