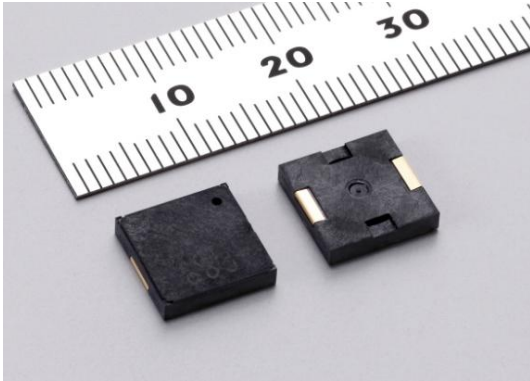


# Piezoelectric SMD Sounder

## - For consumer & Medical market -



### Application

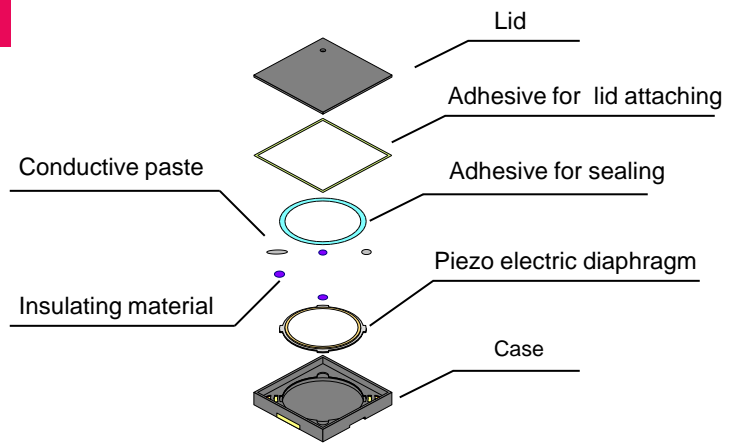
#### For consumer and medical market.

- **Consumer** : Remote controller  
Mobile printer  
Payment terminal  
Digital still camera etc...
- **Medical** : Blood glucose meter  
Thermometer etc...



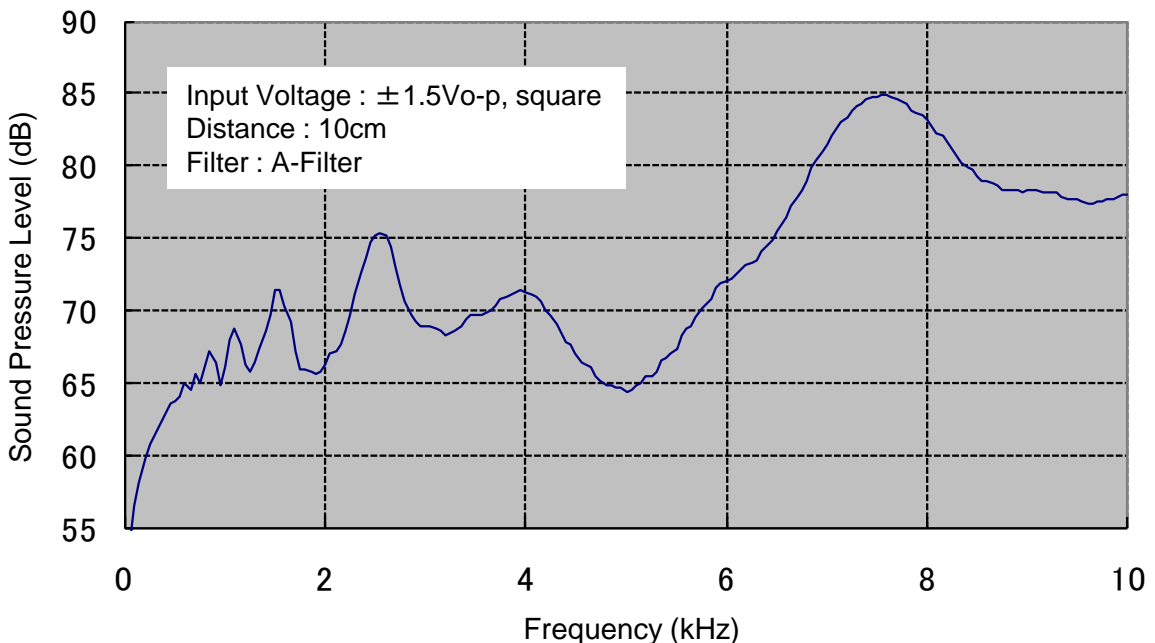
### Feature and Structure

- ✓ **Small, thin and lightweight**  
9.0mm x 9.0mm x 1.9mm  
44% less than current one
- ✓ **Low power consumption**
- ✓ **The piezo based brings in noiseless because of magnet less**



### Sound Pressure Level

Frequency Characteristics of Sound Pressure Level  
**PKMCS0909E4000-R1**



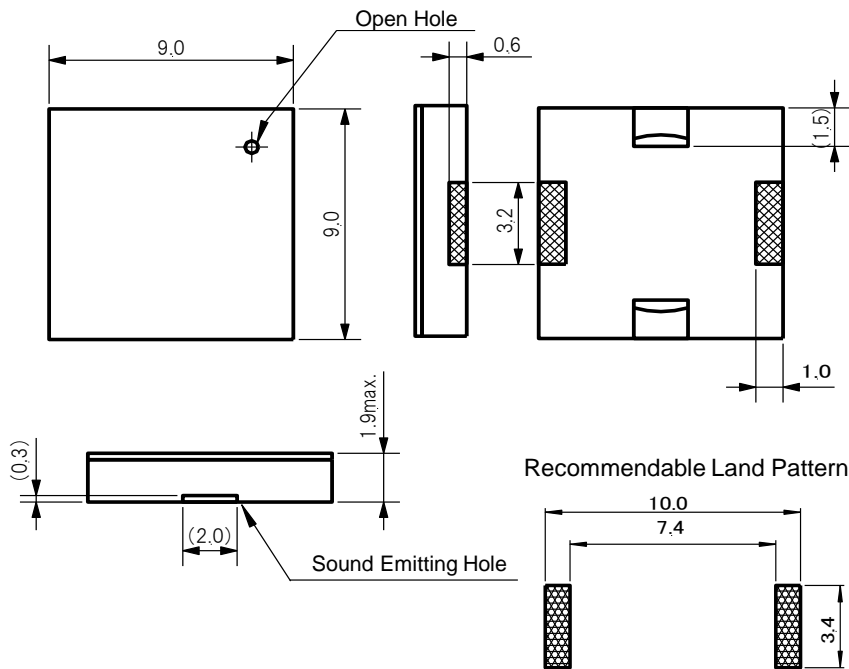
## Specifications

<b>Global Part Number</b>	PKMCS0909E4000-R1
<b>Sound Pressure Level</b>	65dB min.
<b>Measure Condition of Sound Pressure Level</b>	$\pm 1.5$ Vo-p, 4.0kHz, square wave, 10cm
<b>Maximum Input Voltage</b>	$\pm 12.5$ Vo-p max.
<b>Operating Temperature Range</b>	-40 to +85°C
<b>Storage Temperature Range</b>	-40 to +85°C
<b>Drive Type</b>	External-Drive

## Dimensions and Land pattern

(in mm)

### PKMCS Series



\* The location of open hole is not specified.

\* Tol. :  $\pm 0.2$ mm